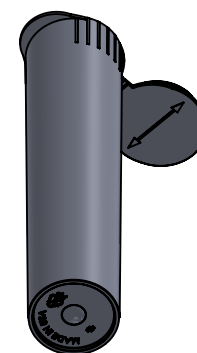
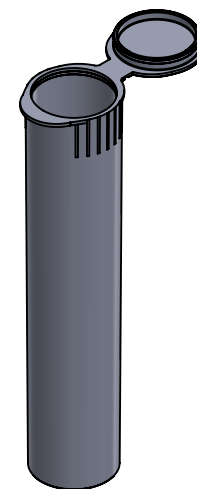
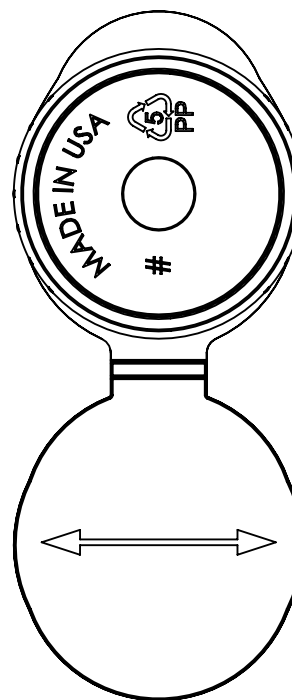
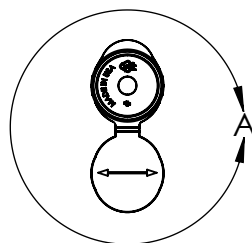
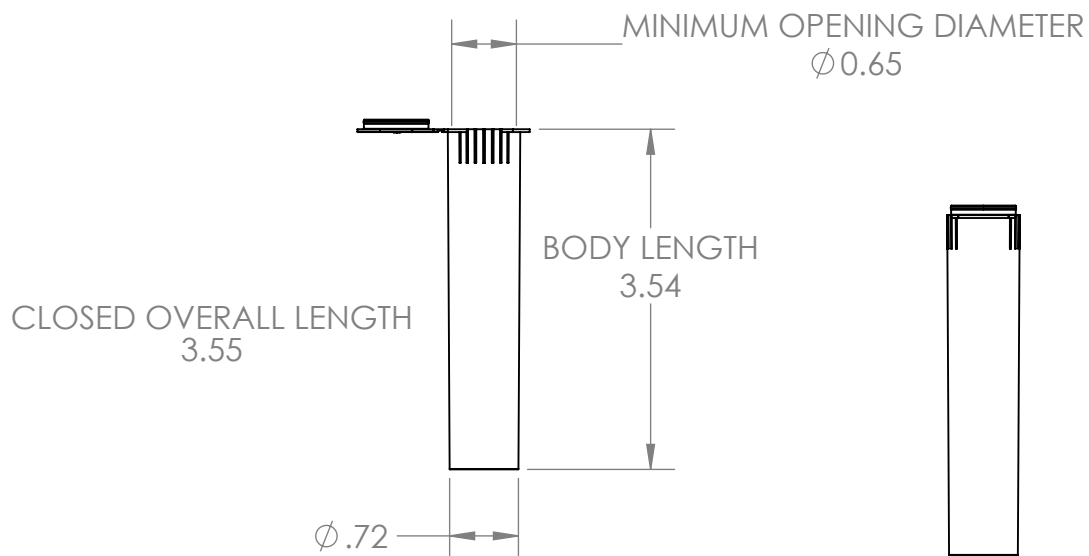


4

3

2

1



NOTES:

1. REV2.1
2. MIN. HINGE LIFE: 25 CYCLES
3. OPENING FORCE: 18-35 LBS
4. COLOR MATCHING BATCH TO BATCH USING HUNTER L+/-1.5, A+/-1.0, B+/-1.0
5. MAX. FLASH ALLOWED: 0.050IN
6. COSMETIC EXEMPTIONS: MINIMAL SCRATCHING AND SCUFFING ALLOWED BUT MAY OCCUR FROM VARYING SHIPPING AND FRIEGHT CONDITIONS



PART NAME

90mm Tube

SIZE	STANDARD MATERIAL	STANDARD WEIGHT
A	POLYPROPYLENE (PP)	4.95 GMS
DO NOT SCALE	SCALE: 1:1	SHEET 1 OF 1

DIMENSIONS ARE IN INCHES

4

3

2

1